



NATIONAL COLLEGE OF PHARMACY

Approved by Pharmacy Council of India, AICTE, DME & Govt of Kerala
Affiliated to Kerala University of Health Sciences, Accredited by NBA

TO WHOMSOEVER IT MAY CONCERN

This is to certify that the information given in the attached documents are verified by me and is true to the best of my knowledge.

Dr. Sujith Varma.K **PRINCIPAL**
Principal National College of Pharmacy
Manassery, Kozhikode
National College of Pharmacy
Manassery, Mukkam, Kozhikode






NATIONAL COLLEGE OF PHARMACY

Approved by Pharmacy Council of India, AICTE, DME & Govt of Kerala
Affiliated to Kerala University of Health Sciences, Accredited by NBA

4.1.1 Availability of adequate infrastructure and physical facilities viz., classrooms, laboratories, ICT facilities, cultural activities, gymnasium, yoga center etc. in the institution.

Metric	Parameter
4.1.1	Availability of adequate infrastructure and physical facilities viz., classrooms, laboratories, ICT facilities, cultural activities, gymnasium, yoga center etc. in the institution




PRINCIPAL
National College of Pharmacy
Manassery, Kozhikode



NATIONAL COLLEGE OF PHARMACY

Approved by Pharmacy Council of India, AICTE, DME & Govt of Kerala
Affiliated to Kerala University of Health Sciences, Accredited by NBA

Additional Information

4.1.1 Availability of adequate infrastructure and physical facilities viz., classrooms, laboratories, ICT facilities, cultural activities, gymnasium, yoga centre etc. in the institution


Academic Facilities and Teaching-Learning Facilities:

Room Description	Count	Description
Classroom	14	Well-ventilated classrooms with green chalkboards, LCD projections, WiFi facility, and smart classroom features.
Laboratories	22	Well-equipped with multiple sets of apparatus and instruments for practical learning.
Seminar Hall	2	A spacious hall with a seating capacity of more than 200 students, equipped with ICT facilities including an LCD projector.
Conference Room	1	A dedicated room equipped with Wi-Fi and smart devices for meetings and discussions.
Library	2	A library housing a substantial volume of books to support the teaching and learning process.
Computer Lab	1	A computer laboratory fully equipped with multiple sets of computer devices for hands-on learning.

Laboratory areas in square meters:

Name of The Lab	No Of Labs	Area of Lab (Sq.Mts)
Pharmaceutics	6	540
Pharmaceutical Chemistry	6	581
Pharmaceutical Analysis	2	179
Pharmaceutical Biotechnology	1	101
Pharmacognosy	1	187
Pharmacology	3	368
Life Science	1	90
Pharmacy Practice	2	157




PRINCIPAL
National College of Pharmacy
Manassery, Kozhikode



NATIONAL COLLEGE OF PHARMACY

Approved by Pharmacy Council of India, AICTE, DME & Govt of Kerala
Affiliated to Kerala University of Health Sciences, Accredited by NBA

Additional Infrastructure:

Facility	Description	Count
Auditorium for Cultural Activities	Spacious, well-ventilated, and well-furnished auditorium with a 500 seating capacity for cultural activities and events.	1
Sports Facilities	Encouraging health awareness with indoor games, playgrounds for cricket, badminton, kabaddi, volleyball, and athletics ground.	1
Gymnasium	Well-equipped gym with treadmills, elliptical trainers, leg extensions, weights, etc., for student use.	1
Yoga Centre	Promotes meditation and yoga, celebrates International Yoga Day, and organizes Yogasana "and" Stress management programs.	1
Herbal Garden	Maintained by the Department of Pharmacognosy, features 339+ medicinal plant varieties with descriptive labels.	1
Canteen	Dining facility for staff and students.	1
Parking Area	Parking area for staff and students.	1
Guest House	Accommodation facility for guests and visitors.	1
Transport Facilities	Transportation services provided for students.	1
Power back UP	Power Generators with a capacity of 65 KVA	2
WiFi enabled Campus	Networking with 24-hour Internet connectivity (Bandwidth: 50-200 Mbps) Wi-Fi Internet connectivity over the entire campus	

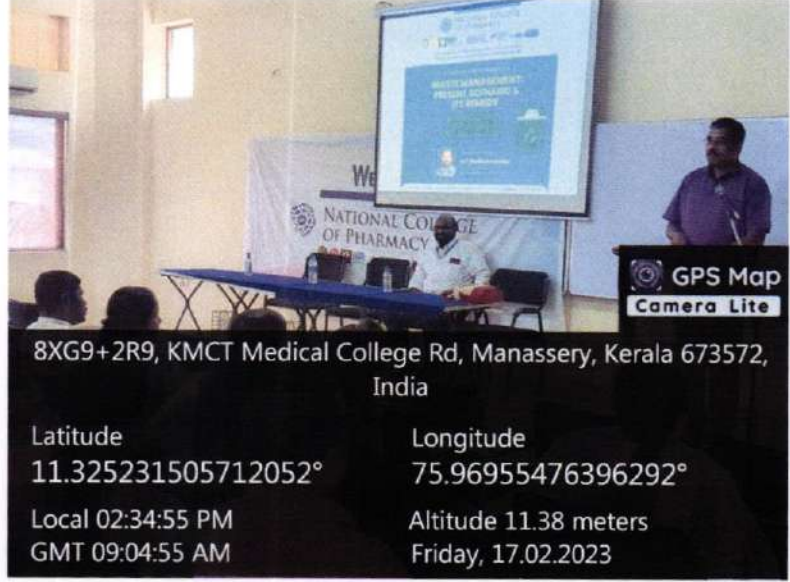


Srijithamma
PRINCIPAL
National College of Pharmacy
Manassery, Kozhikode



NATIONAL COLLEGE OF PHARMACY

Approved by Pharmacy Council of India, AICTE, DME & Govt of Kerala
Affiliated to Kerala University of Health Sciences, Accredited by NBA



8XG9+2R9, KMCT Medical College Rd, Manassery, Kerala 673572, India

Latitude	Longitude
11.325231505712052°	75.96955476396292°
Local 02:34:55 PM	Altitude 11.38 meters
GMT 09:04:55 AM	Friday, 17.02.2023

200 seated seminar hall



Sujitha
PRINCIPAL
National College of Pharmacy
Manassery, Kozhikode



NATIONAL COLLEGE OF PHARMACY

Approved by Pharmacy Council of India, AICTE, DME & Govt of Kerala
Affiliated to Kerala University of Health Sciences, Accredited by NBA

ICT Enabled Class Room



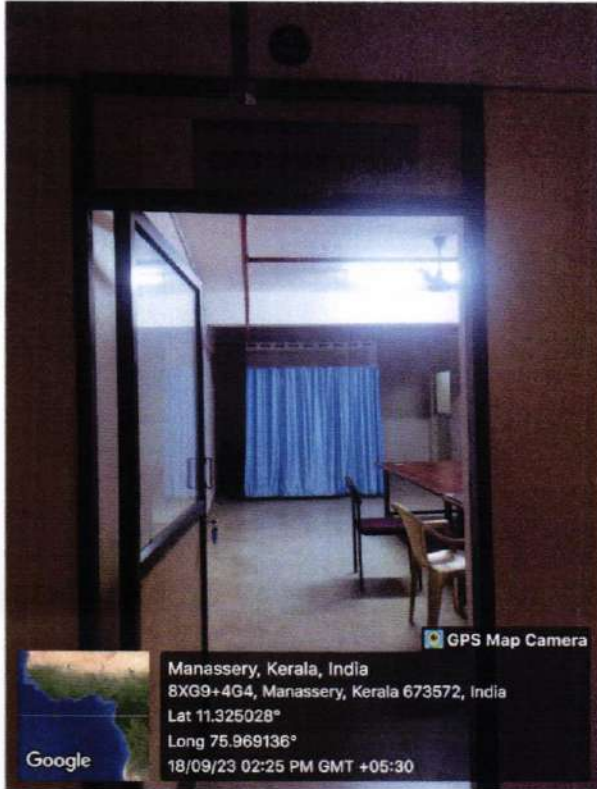
Sujithra

PRINCIPAL
National College of Pharmacy
Manassery, Kozhikode

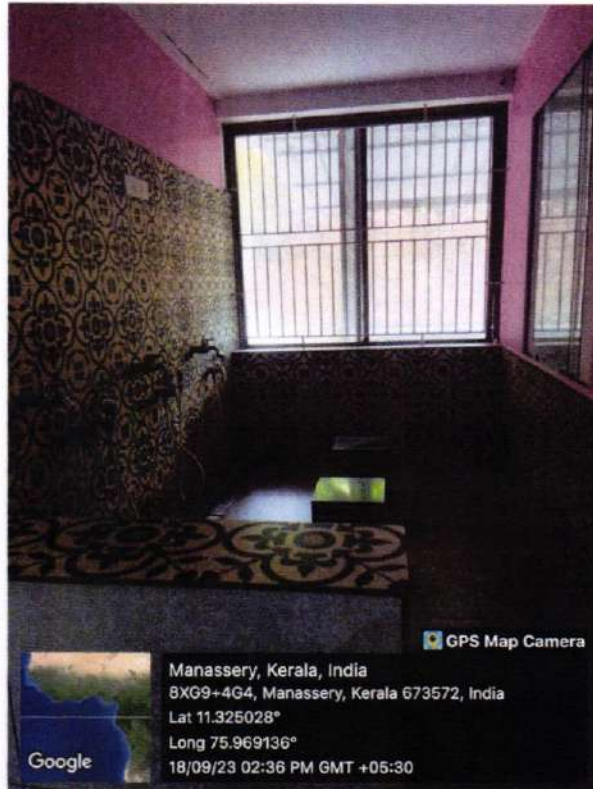


NATIONAL COLLEGE OF PHARMACY

Approved by Pharmacy Council of India, AICTE, DME & Govt of Kerala
Affiliated to Kerala University of Health Sciences, Accredited by NBA



Common room Girls



Wash area



Prayer Room



Boys Common room



Sujitha



NATIONAL COLLEGE OF PHARMACY

Approved by Pharmacy Council of India, AICTE, DME & Govt of Kerala
Affiliated to Kerala University of Health Sciences, Accredited by NBA



Staff Room



Staff room



Sujitha
PRINCIPAL

National College of Pharmacy
Manassery, Kozhikode

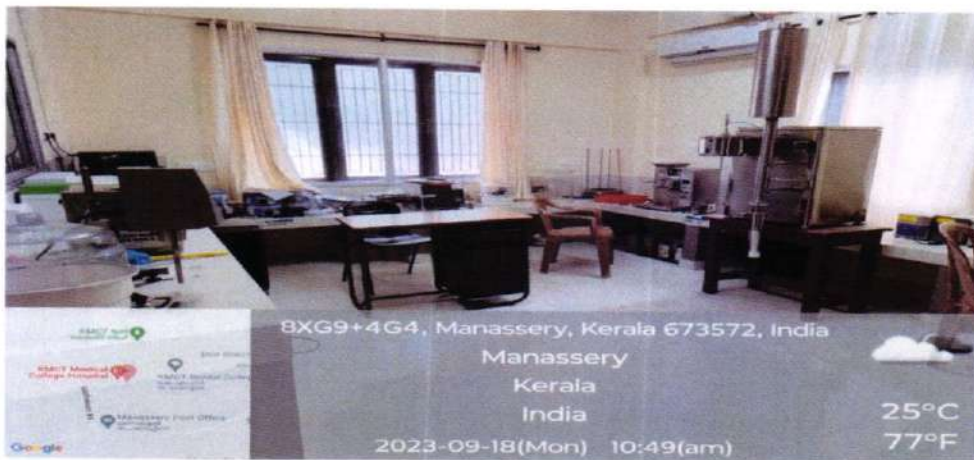


NATIONAL COLLEGE OF PHARMACY

Approved by Pharmacy Council of India, AICTE, DME & Govt of Kerala
Affiliated to Kerala University of Health Sciences, Accredited by NBA



Machine room I



Machine room II

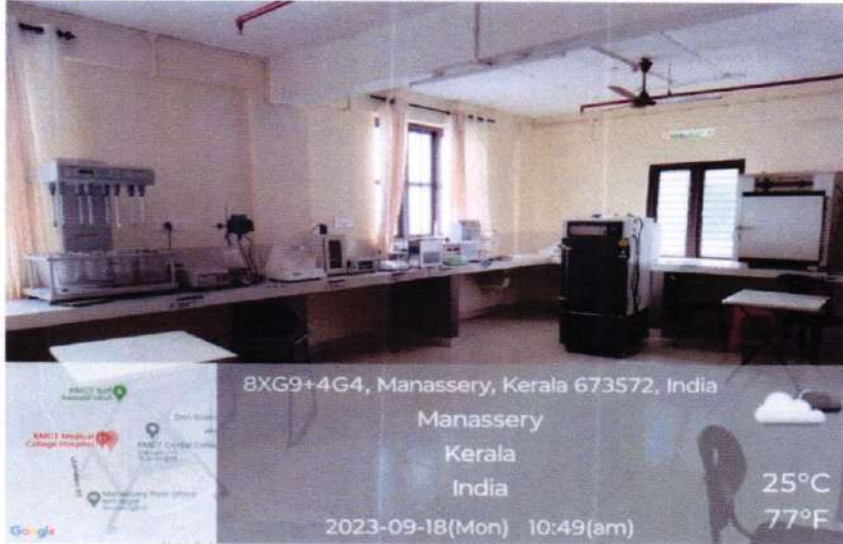


Laboratories

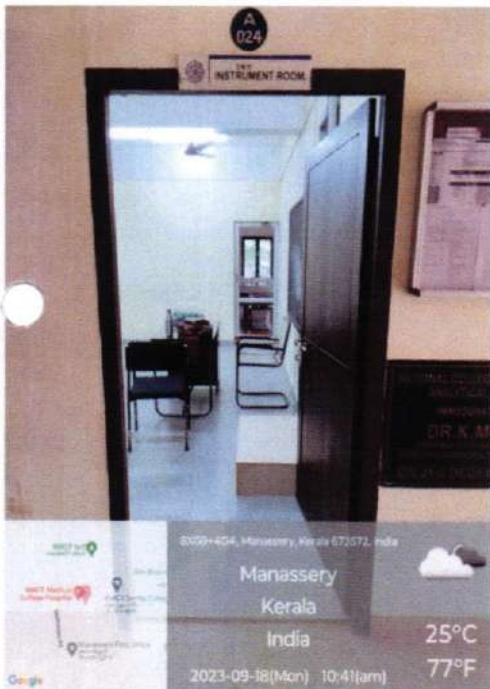


NATIONAL COLLEGE OF PHARMACY

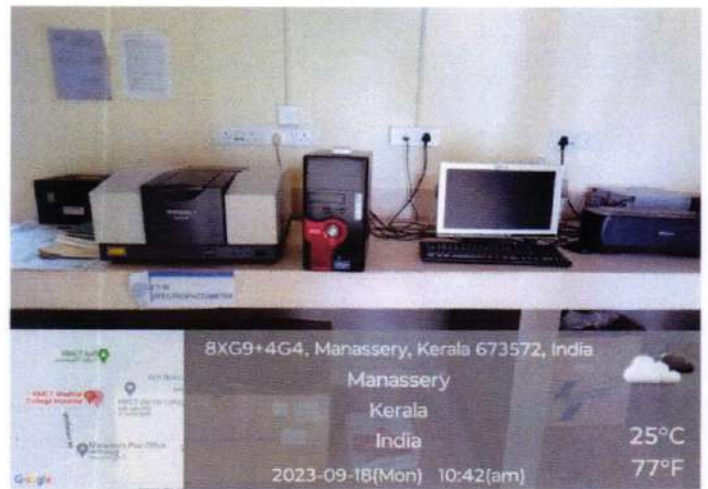
Approved by Pharmacy Council of India, AICTE, DME & Govt of Kerala
Affiliated to Kerala University of Health Sciences, Accredited by NBA



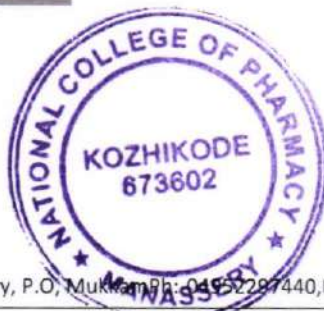
Laboratories



Instrumentation room



Instrumentation Room



KMCT Medical College Campus, Manassery, P.O, Mukkam Ph: 04952287440, Email:-pharmacy@kmct.edu.in, www.nationalcollegeofpharmacy.org

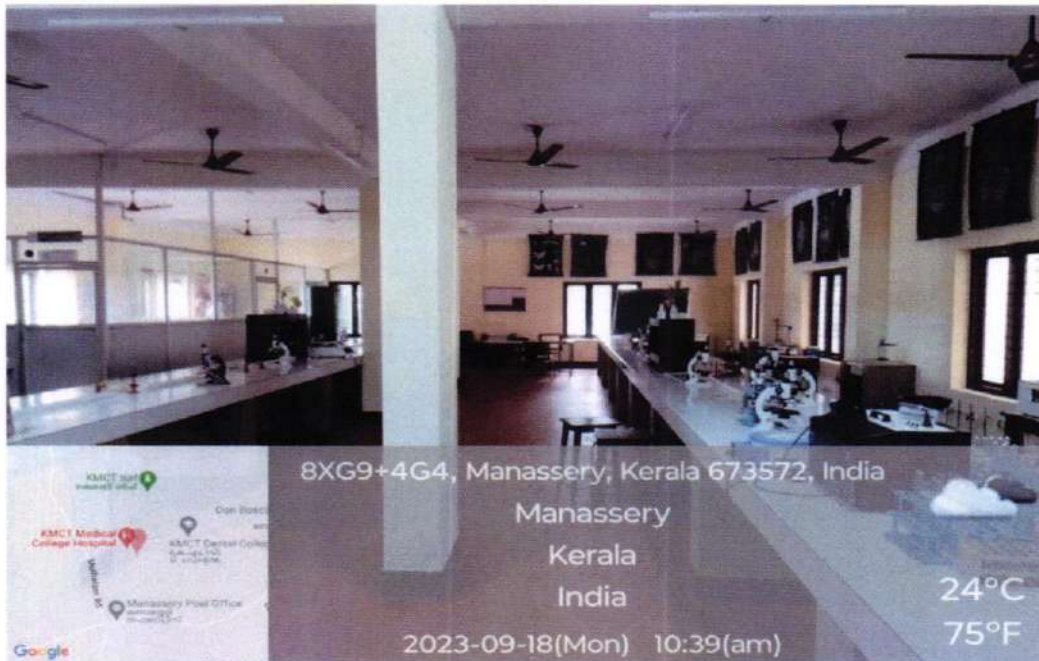
Srinivasan
PRINCIPAL

**National College of Pharmacy
Manassery, Kozhikode**



NATIONAL COLLEGE OF PHARMACY

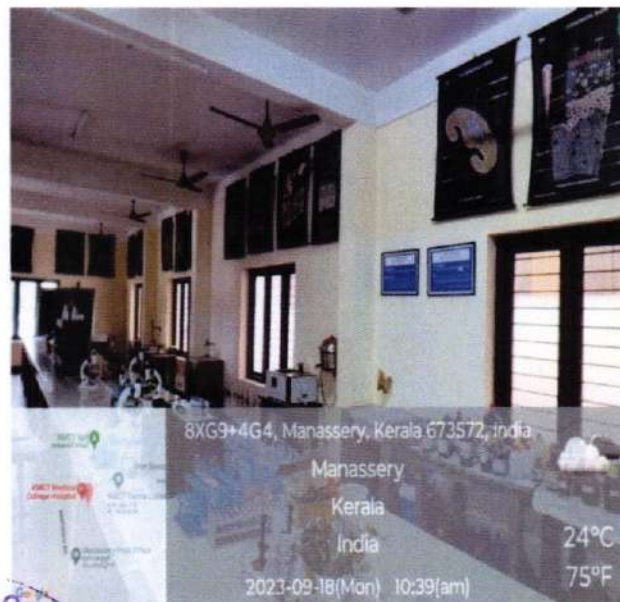
Approved by Pharmacy Council of India, AICTE, DME & Govt of Kerala
Affiliated to Kerala University of Health Sciences, Accredited by NBA



Laboratories



Laboratories



Laboratories



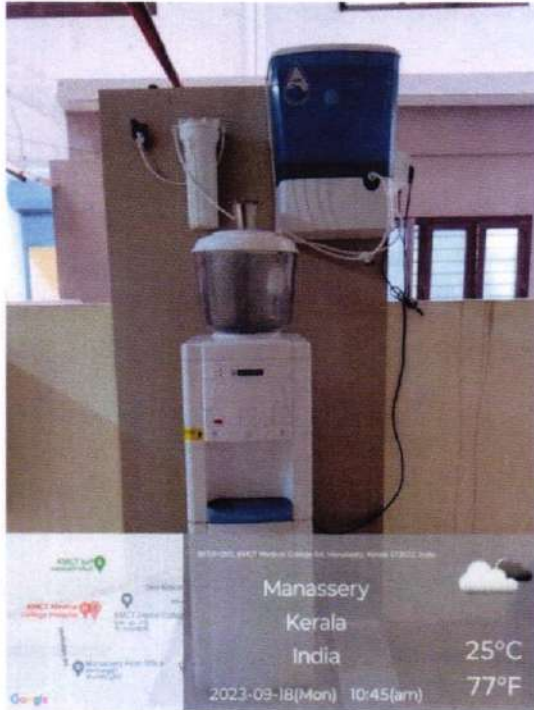
Sujitha
PRINCIPAL

**National College of Pharmacy
Manassery, Kozhikode**



NATIONAL COLLEGE OF PHARMACY

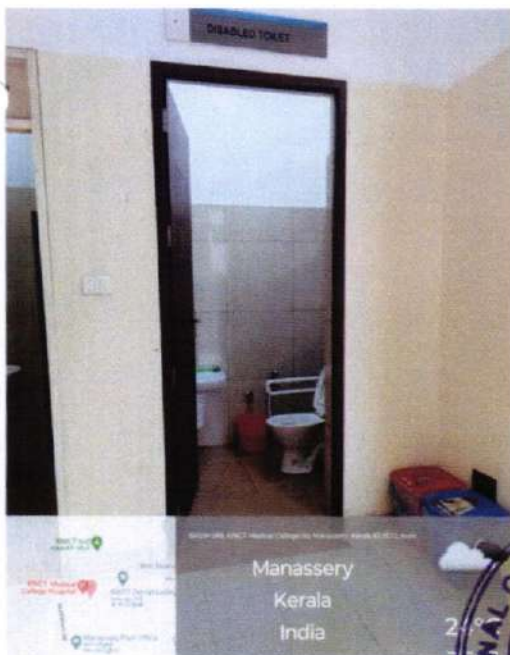
Approved by Pharmacy Council of India, AICTE, DME & Govt of Kerala
Affiliated to Kerala University of Health Sciences, Accredited by NBA



Drinking water facilities



Model pharmacy



Diabled toilets



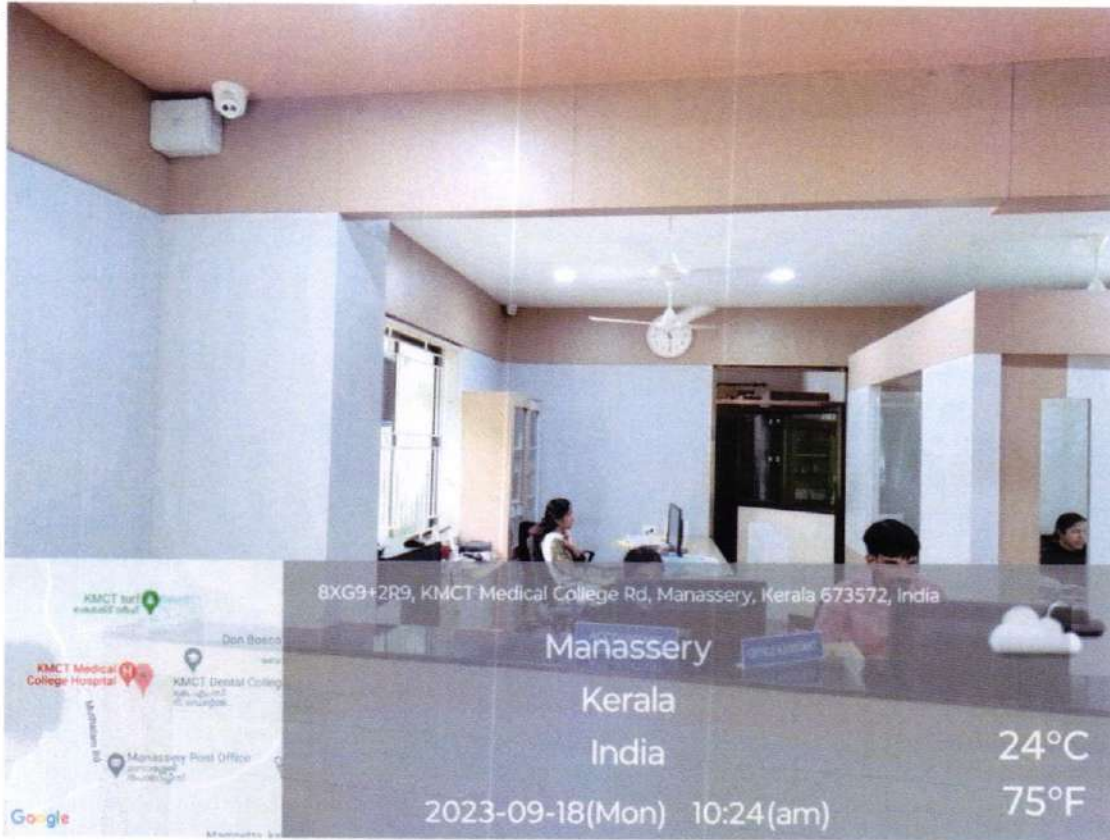
Diabled toilets





NATIONAL COLLEGE OF PHARMACY

Approved by Pharmacy Council of India, AICTE, DME & Govt of Kerala
Affiliated to Kerala University of Health Sciences, Accredited by NBA



Office Room



Srijithra
PRINCIPAL
National College of Pharmacy
Manassery, Kozhikode



NATIONAL COLLEGE OF PHARMACY

Approved by Pharmacy Council of India, AICTE, DME & Govt of Kerala
Affiliated to Kerala University of Health Sciences, Accredited by NBA



Corridors



Disabled friendly Ramp

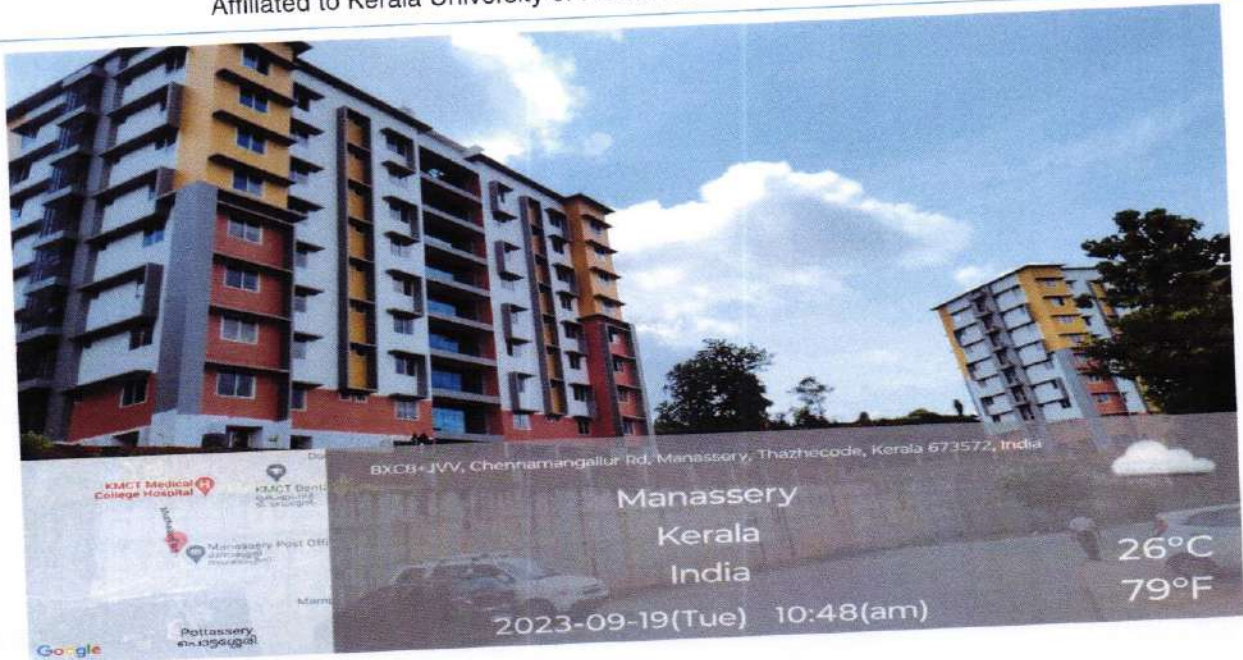


Sujitha
PRINCIPAL
National College of Pharmacy
Manassery, Kozhikode

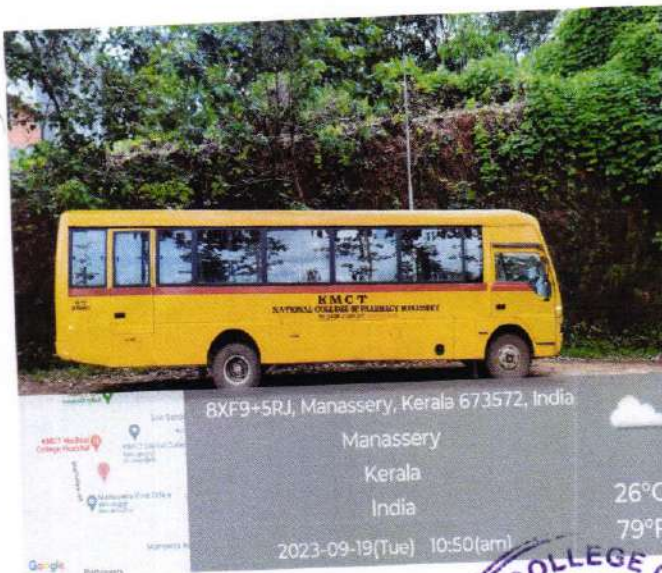


NATIONAL COLLEGE OF PHARMACY

Approved by Pharmacy Council of India, AICTE, DME & Govt of Kerala
Affiliated to Kerala University of Health Sciences, Accredited by NBA



Hostel block



Buses for Transport



Sijithra
PRINCIPAL

National College of Pharmacy
Manassery, Kozhikode



NATIONAL COLLEGE OF PHARMACY

Approved by Pharmacy Council of India, AICTE, DME & Govt of Kerala
Affiliated to Kerala University of Health Sciences, Accredited by NBA



8XGC+SJS, KMCT Medical College Rd, Manassery, Kerala 673572, India

Manassery
Kerala
India

28°C
82°F

2023-09-19(Tue) 01:11(pm)

Electric vehicle for in-campus travel



Sujithamma
PRINCIPAL
National College of Pharmacy
Manassery, Kozhikode



NATIONAL COLLEGE OF PHARMACY

Approved by Pharmacy Council of India, AICTE, DME & Govt of Kerala
Affiliated to Kerala University of Health Sciences, Accredited by NBA



Indoor Sports Complex



Sujitha
PRINCIPAL
National College of Pharmacy
Manassery, Kozhikode



NATIONAL COLLEGE OF PHARMACY

Approved by Pharmacy Council of India, AICTE, DME & Govt of Kerala
Affiliated to Kerala University of Health Sciences, Accredited by NBA



8XFF+CFP, Manassery, Kerala 673572, India

Manassery
Kerala
India

28°C
82°F

2023-09-19(Tue) 01:06(pm)



Srinivasan
PRINCIPAL
National College of Pharmacy
Manassery, Kozhikode